



LANZAMIENTO CAMPAÑA FINA 2019 - 2020

#CAMPAÑA FINA 1920



PERSPECTIVA CLIMÁTICA CEREALES DE INVIERNO 2019/20

Ing. Eduardo Sierra – Agroclimatología



LANZAMIENTO CAMPAÑA FINA 2019 - 2020

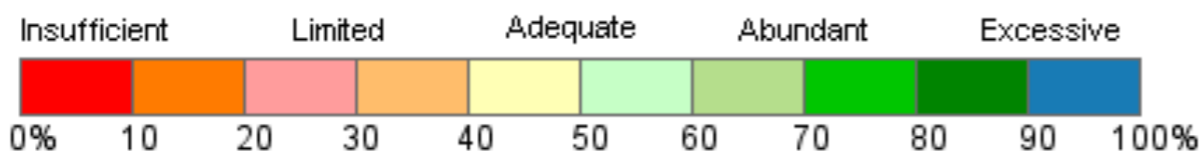
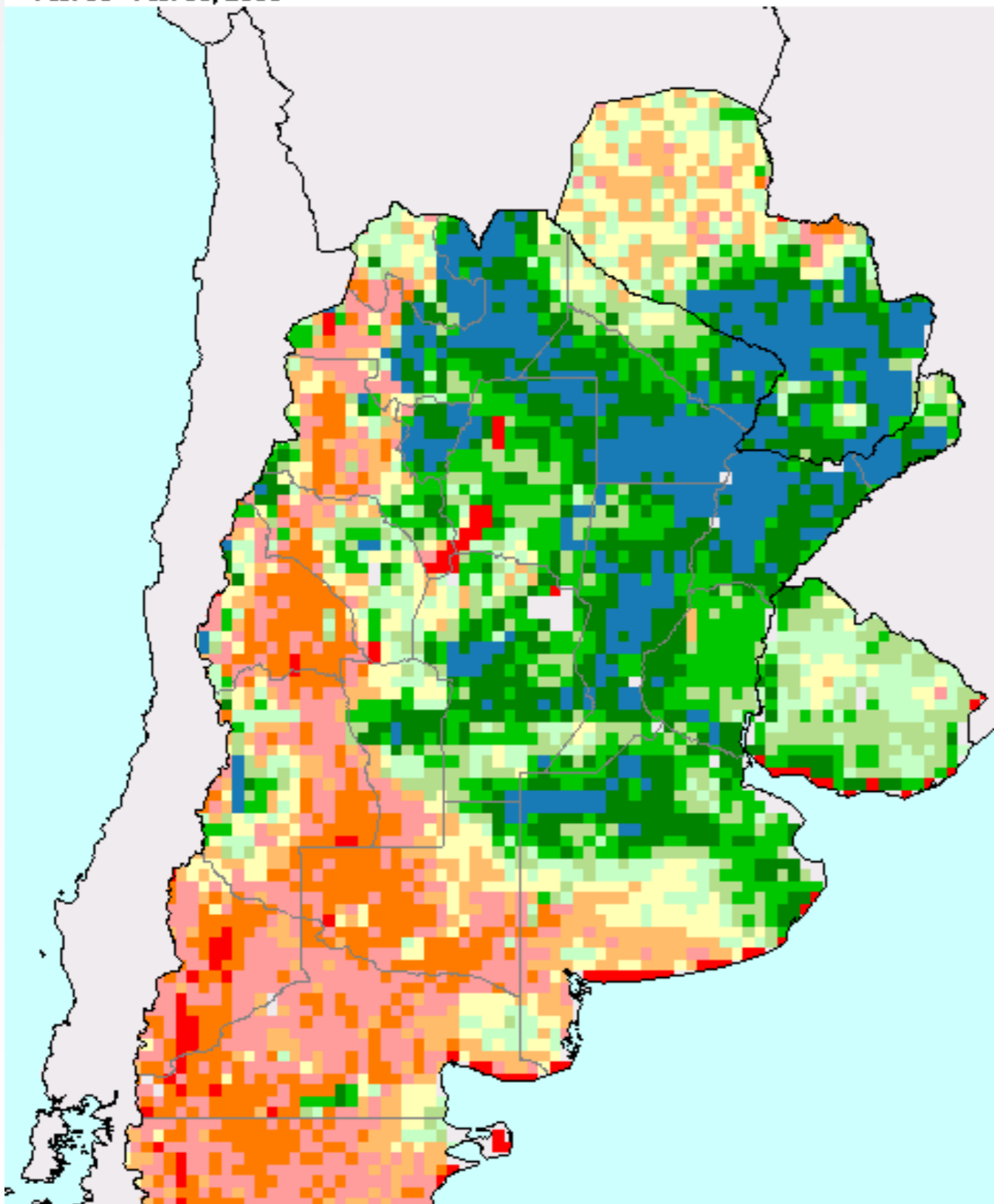
ESTADO DEL SISTEMA CLIMÁTICO

ESTADO DEL SISTEMA CLIMÁTICO



Percent Soil Moisture (SMAP)

Feb. 13 - Feb. 15, 2019

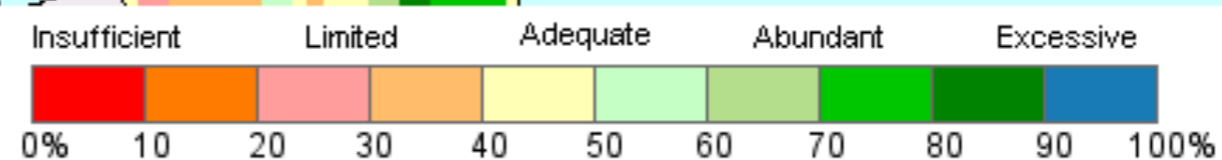
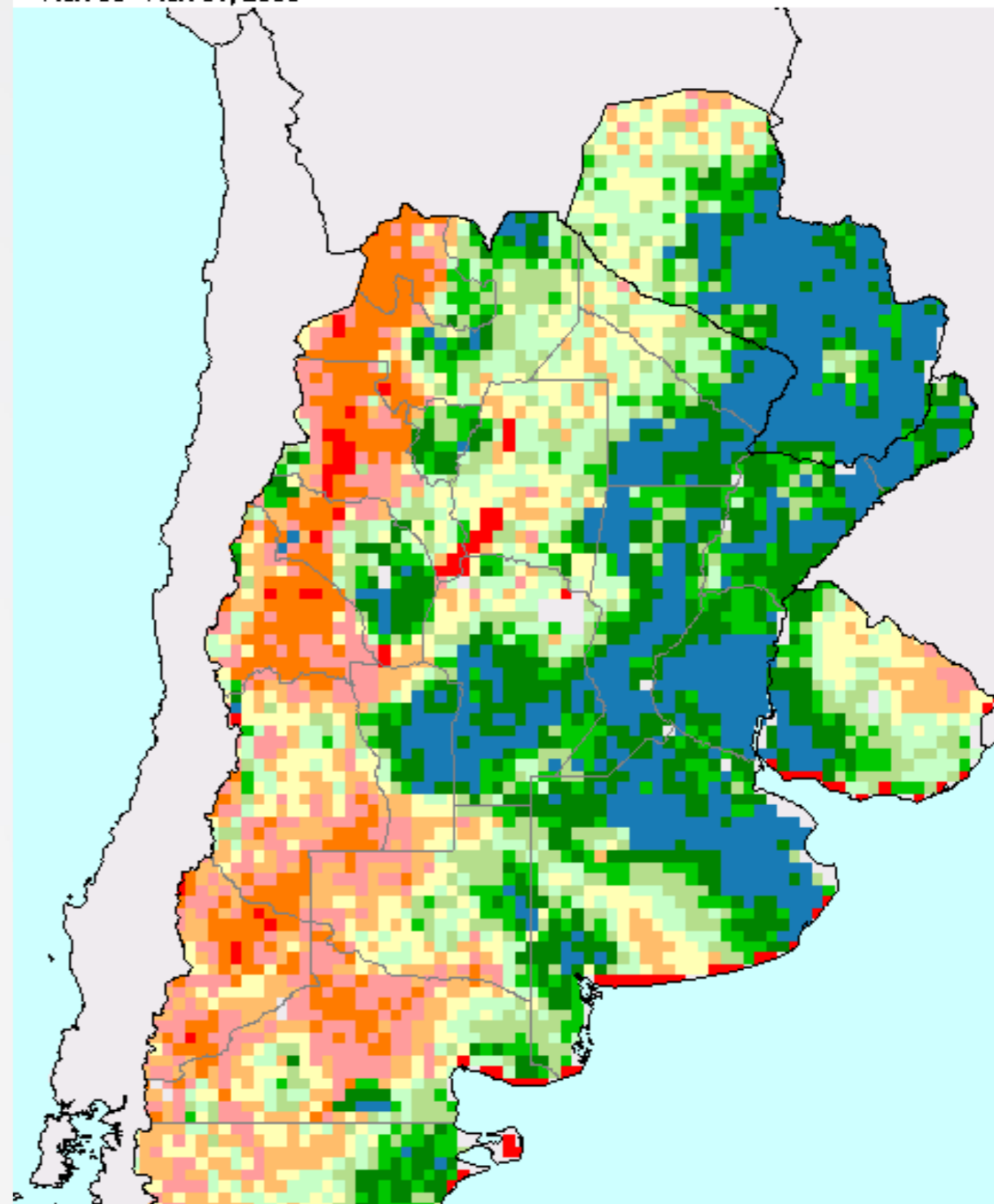


USDA Foreign Agricultural Service
Office of Global Analysis
International Production Assessment Division

Source: 2-layer Palmer Soil Moisture Model
(corrected with SMAP imagery)
NASA/GSFC/HSB; USAF 557th W/W

Percent Soil Moisture (SMAP)

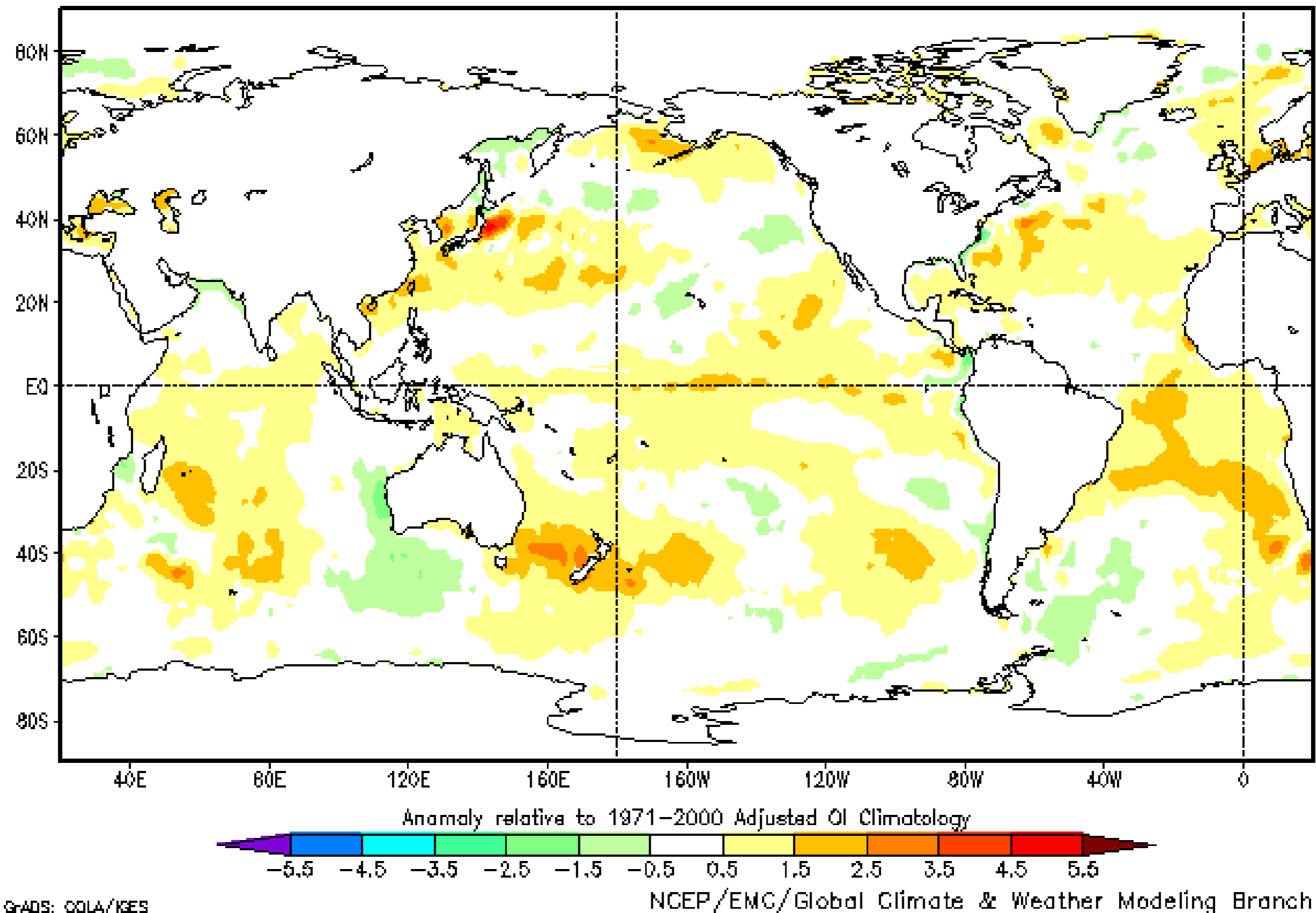
Mar. 15 - Mar. 17, 2019



USDA Foreign Agricultural Service
Office of Global Analysis
International Production Assessment Division

Source: 2-layer Palmer Soil Moisture Model
(corrected with SMAP imagery)
NASA/GSFC/HSB; USAF 557th W/W

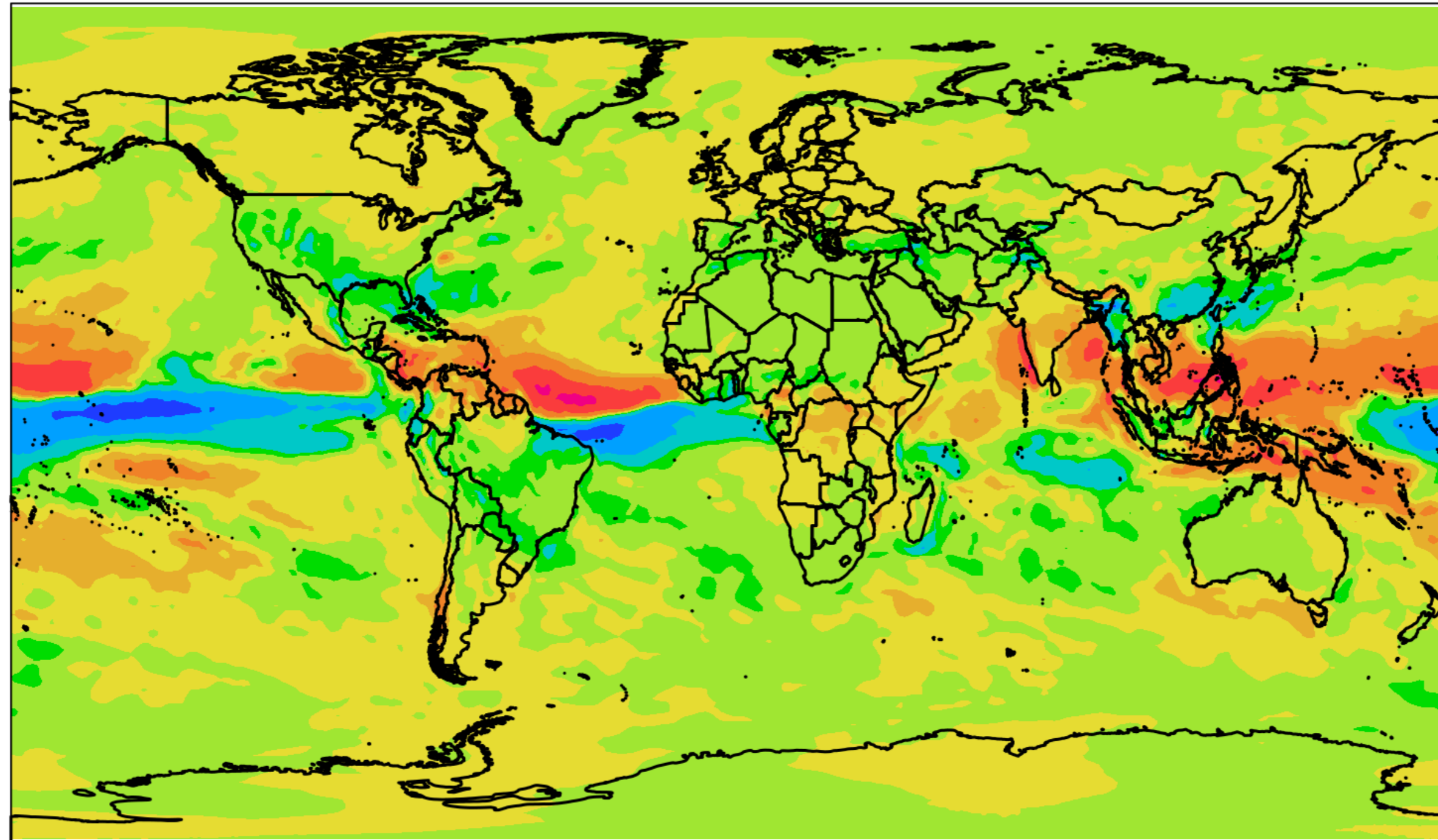
Olv2 Sea Surface Temperature Anomaly (°C) 17 MAR 2019 to 23 MAR 2019



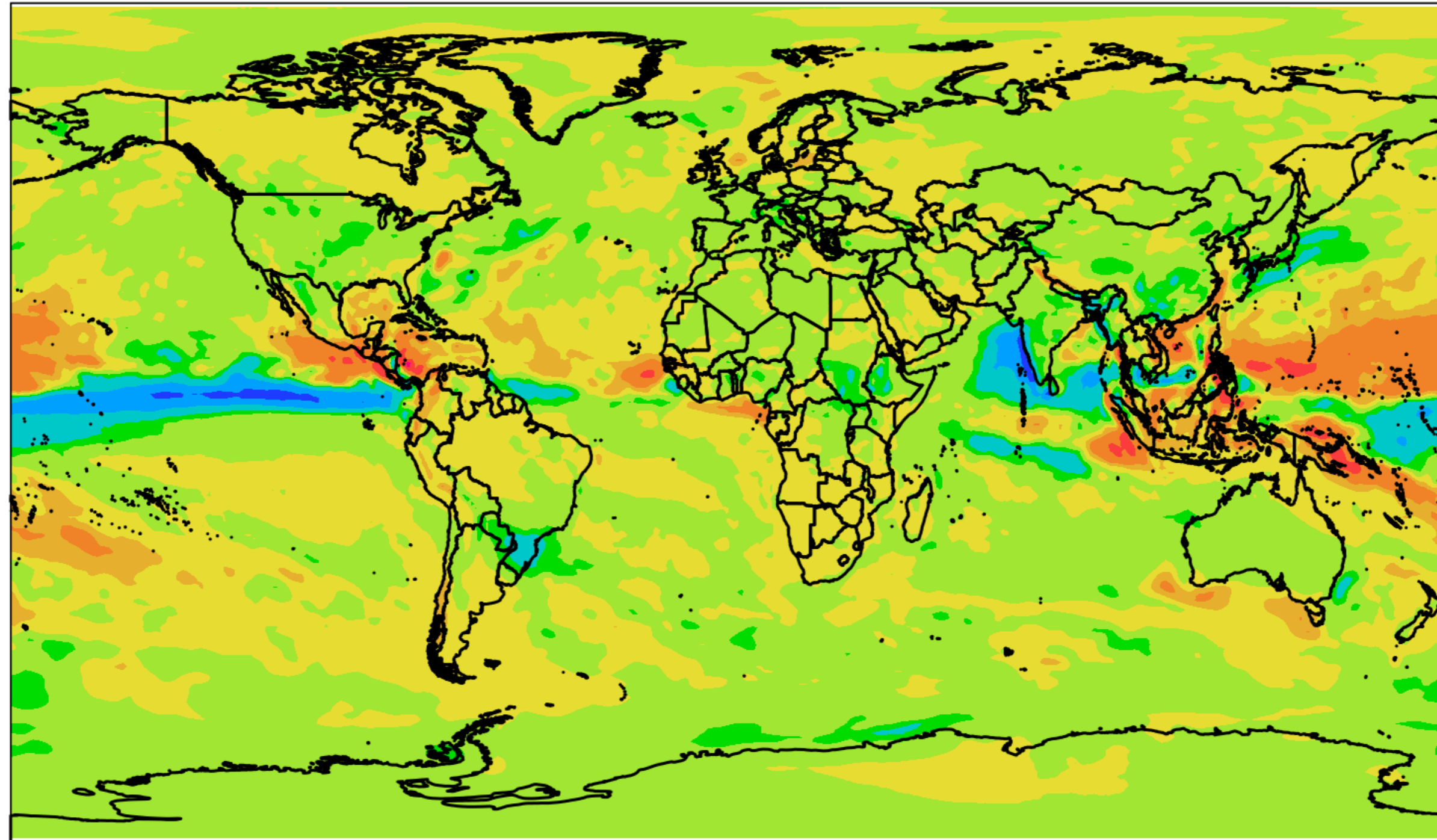
GRADS: OOLA/KSES

PERSPECTIVA CLIMÁTICA ESTACIONAL GLOBAL

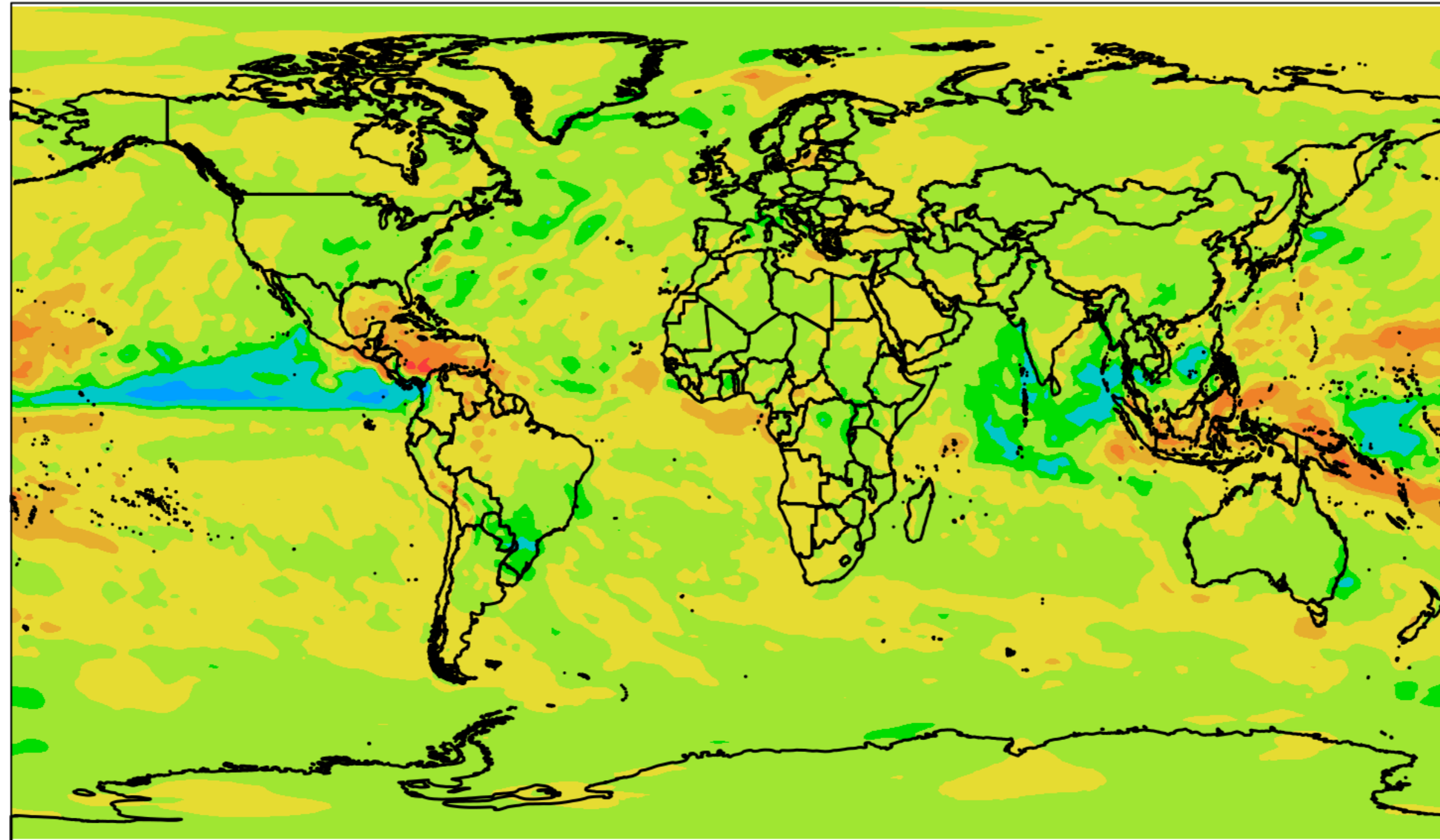
ANOMALIA DE PRECIPITACION
(mm/trimestre)
OTONO 2019



ANOMALIA DE PRECIPITACION
(mm/trimestre)
INVIERNO 2019



ANOMALIA DE PRECIPITACION
(mm/trimestre)
PRIMAVERA 2019

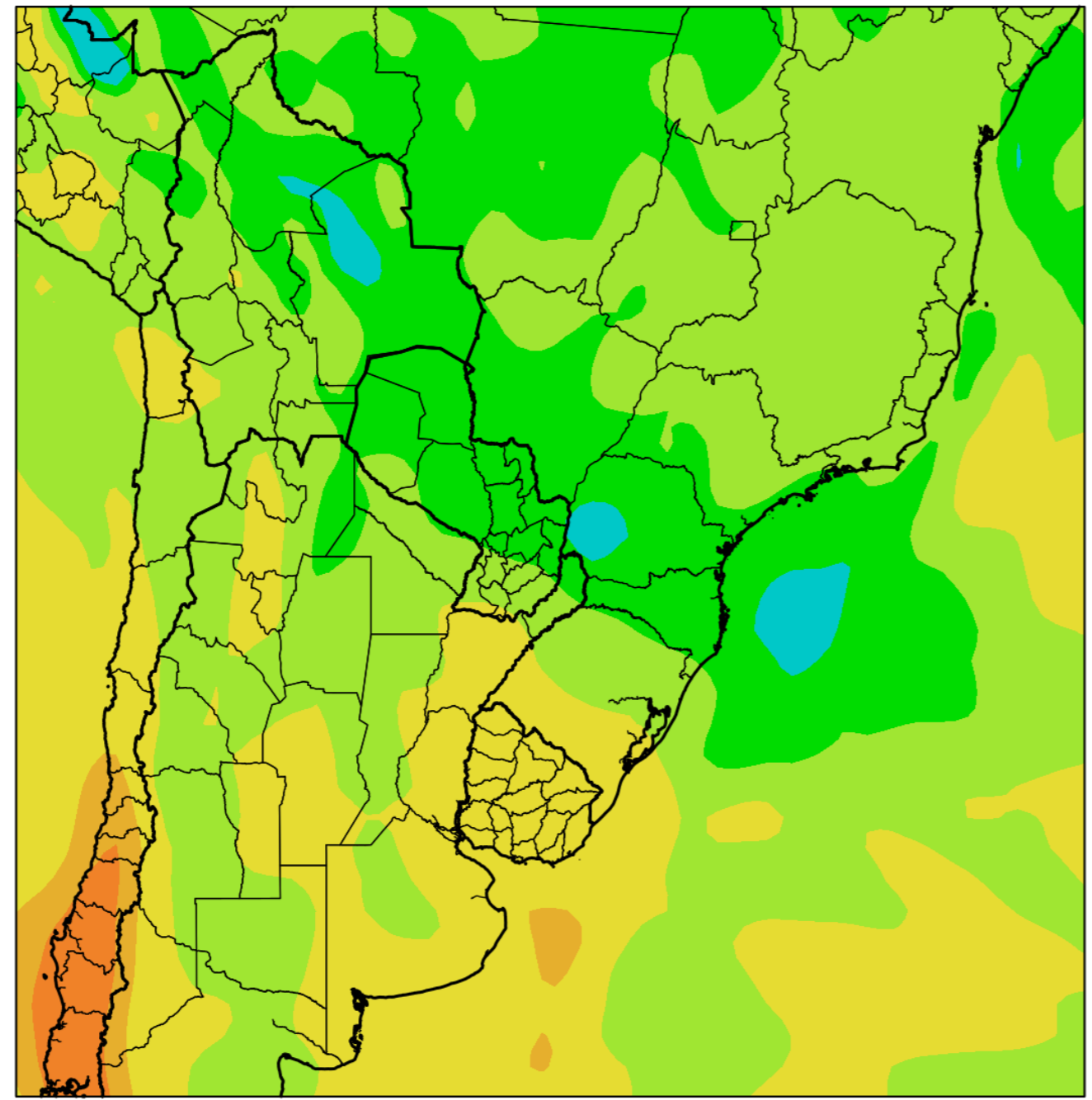


PERSPECTIVA CLIMÁTICA ESTACIONAL SUDAMERICANA

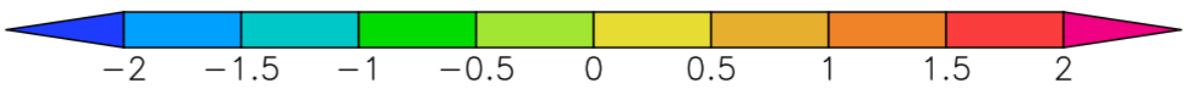
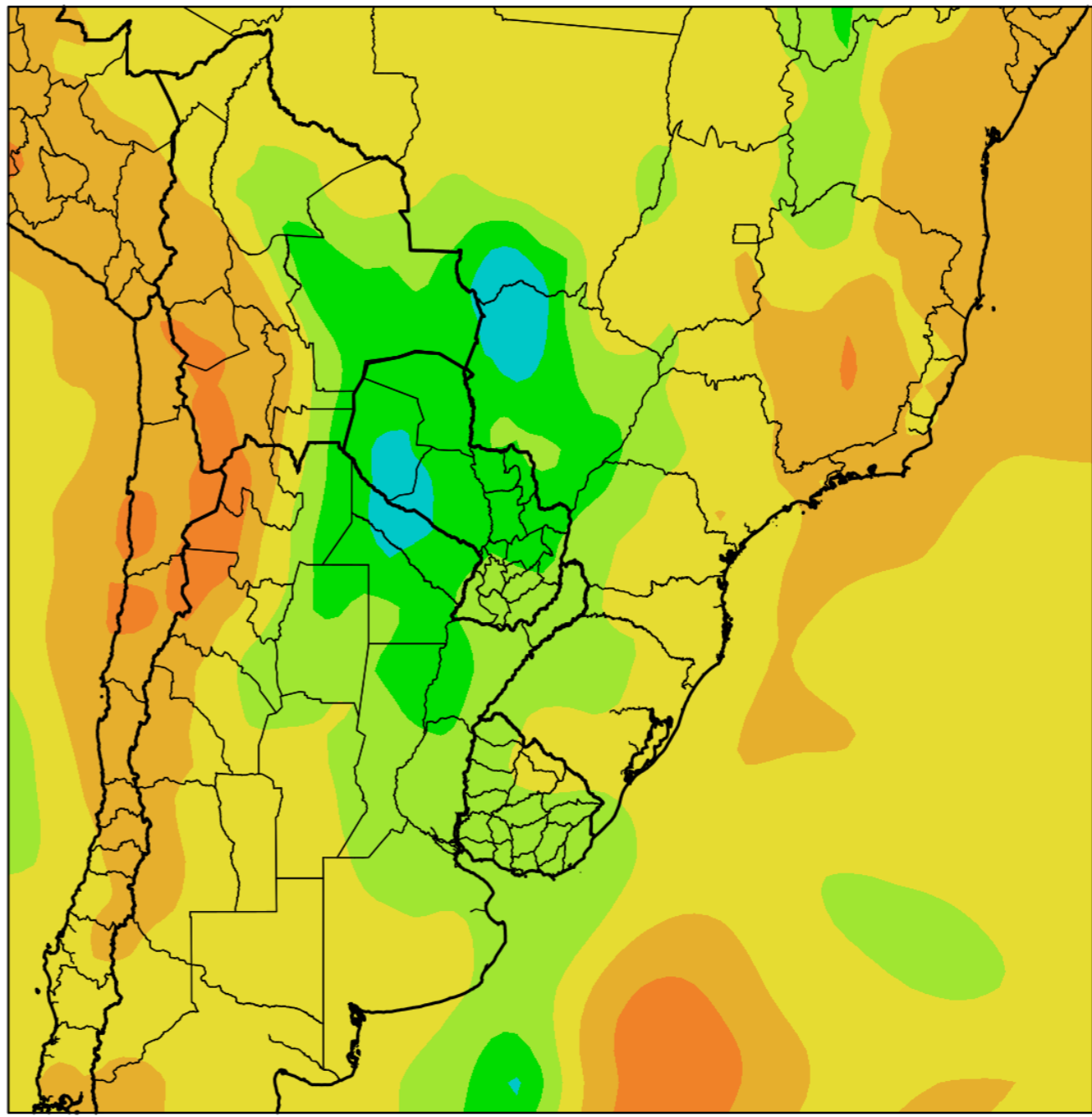
PERSPECTIVA CLIMÁTICA ESTACIONAL SUDAMERICANA



ANOMALIA DE PRECIPITACION
(mm/trimestre)
OTONO 2019



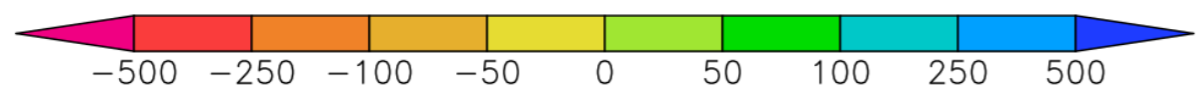
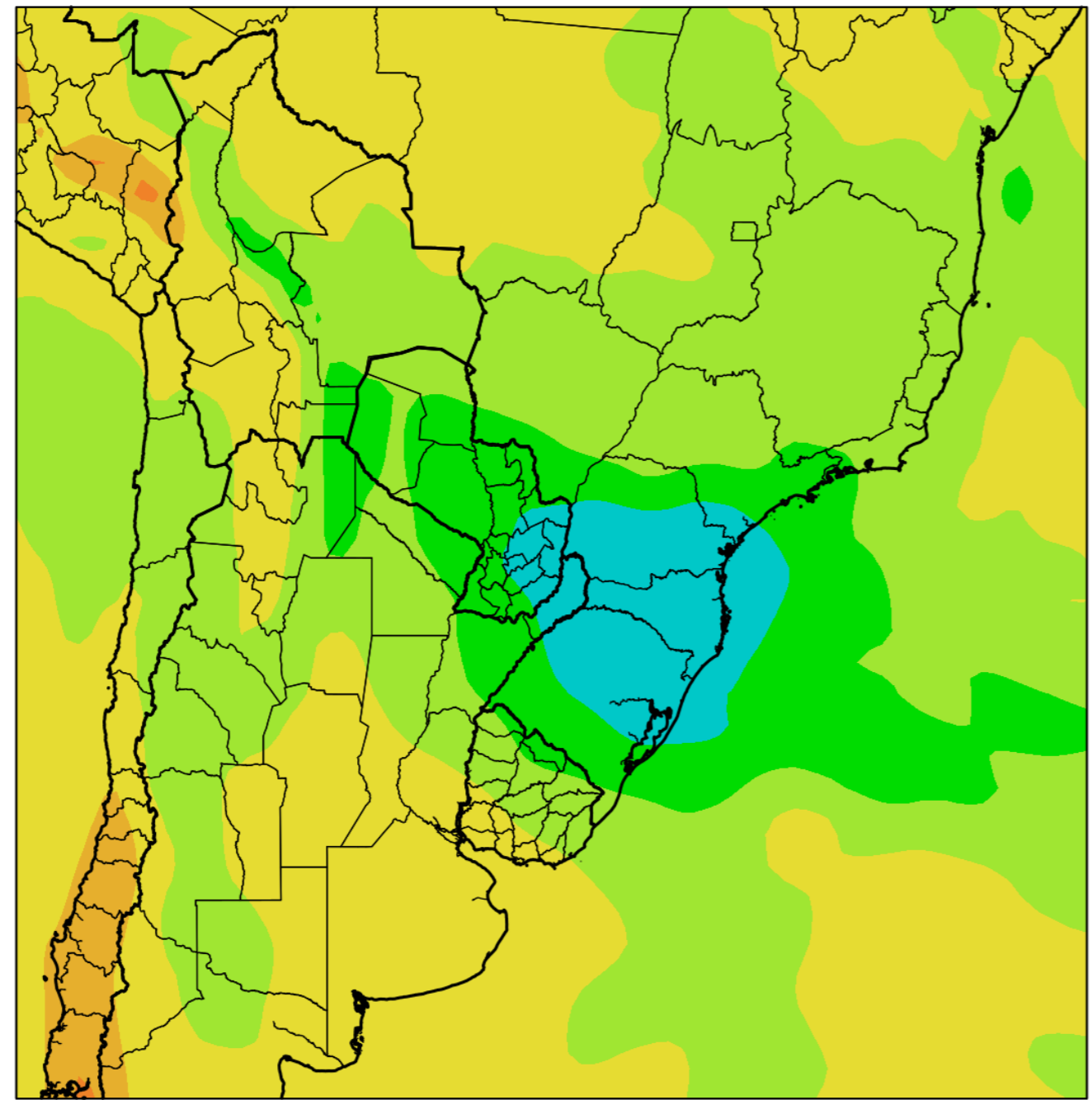
ANOMALIA DE TEMPERATURA
(G. Cent.)
OTONO 2019



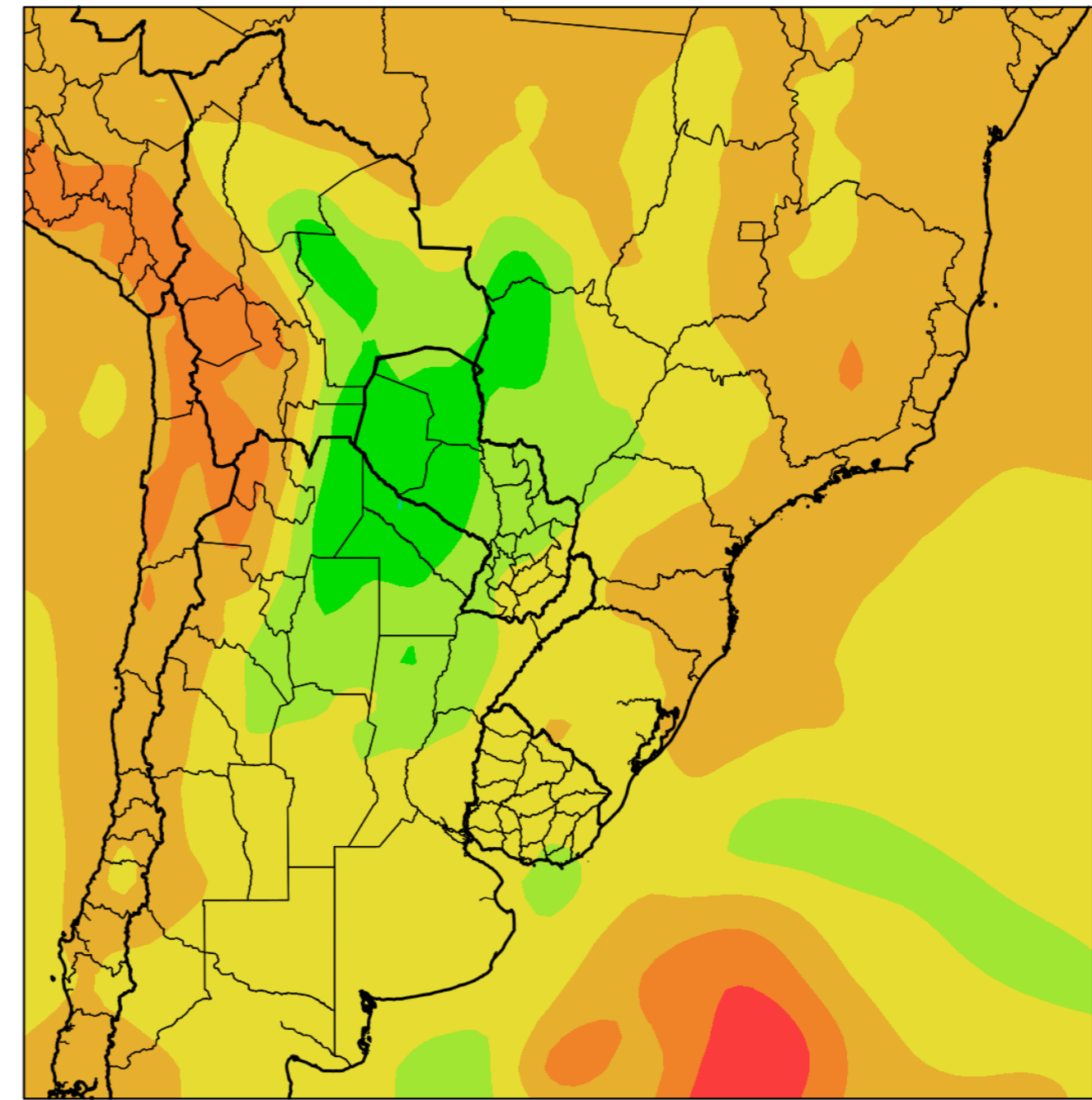
PERSPECTIVA CLIMÁTICA ESTACIONAL SUDAMERICANA



ANOMALIA DE PRECIPITACION
(mm/trimestre)
INVIERNO 2019

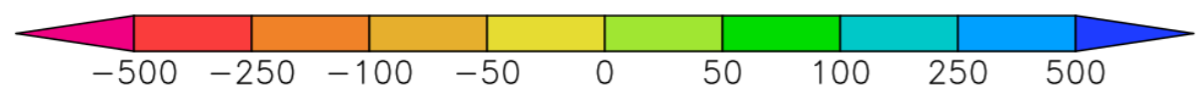
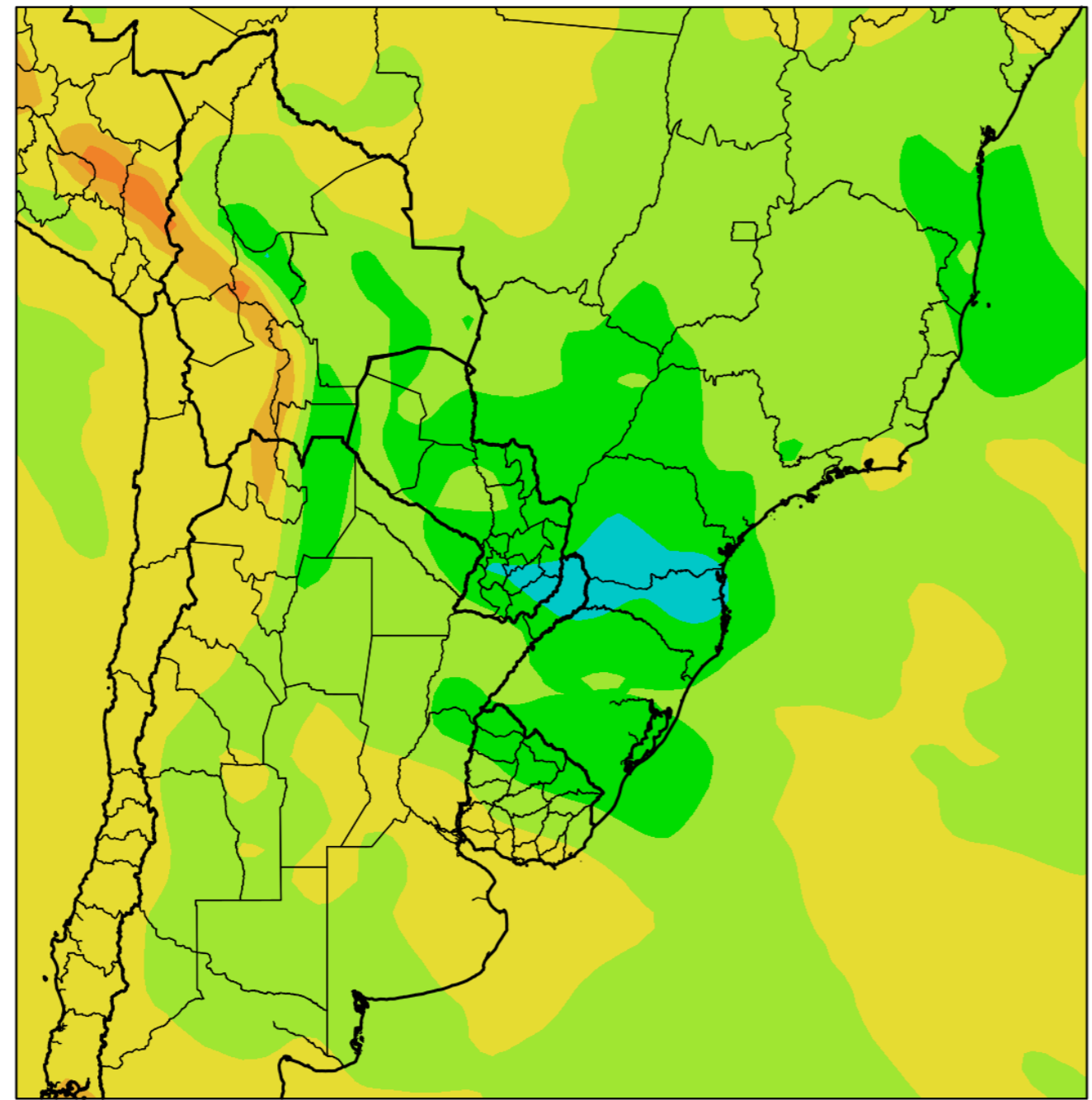


ANOMALIA DE TEMPERATURA
(G. Cent.)
INVIERNO 2019

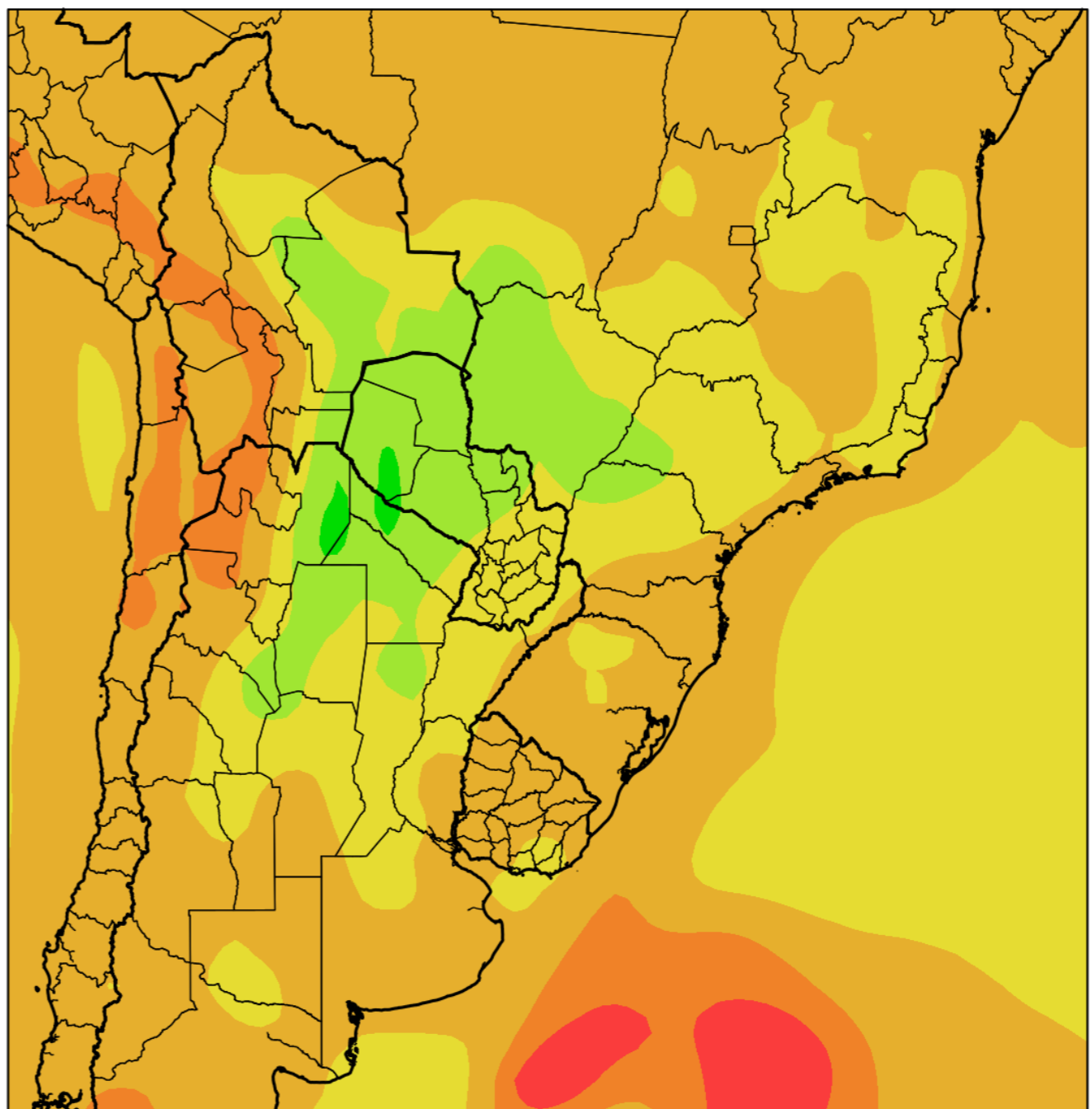


PERSPECTIVA CLIMÁTICA ESTACIONAL SUDAMERICANA

ANOMALIA DE PRECIPITACION
(mm/trimestre)
PRIMAVERA 2019



ANOMALIA DE TEMPERATURA
(G. Cent.)
PRIMAVERA 2019





LANZAMIENTO CAMPAÑA FINA 2019 - 2020

¡GRACIAS POR SU ATENCIÓN!

#CAMPAÑAFINA1920

